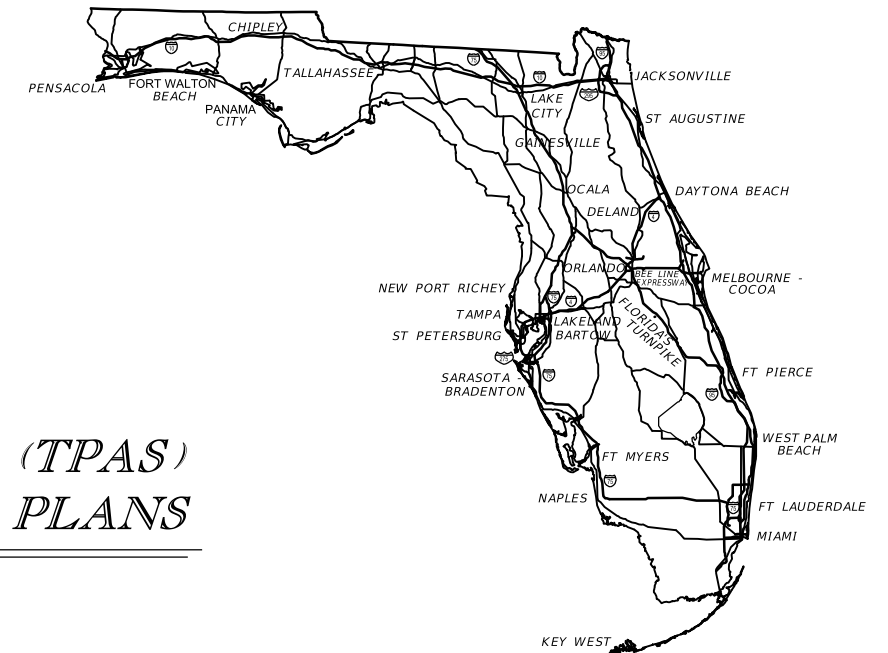


STATE OF FLORIDA
DEPARTMENT OF TRANSPORTATION

CONTRACT PLANS

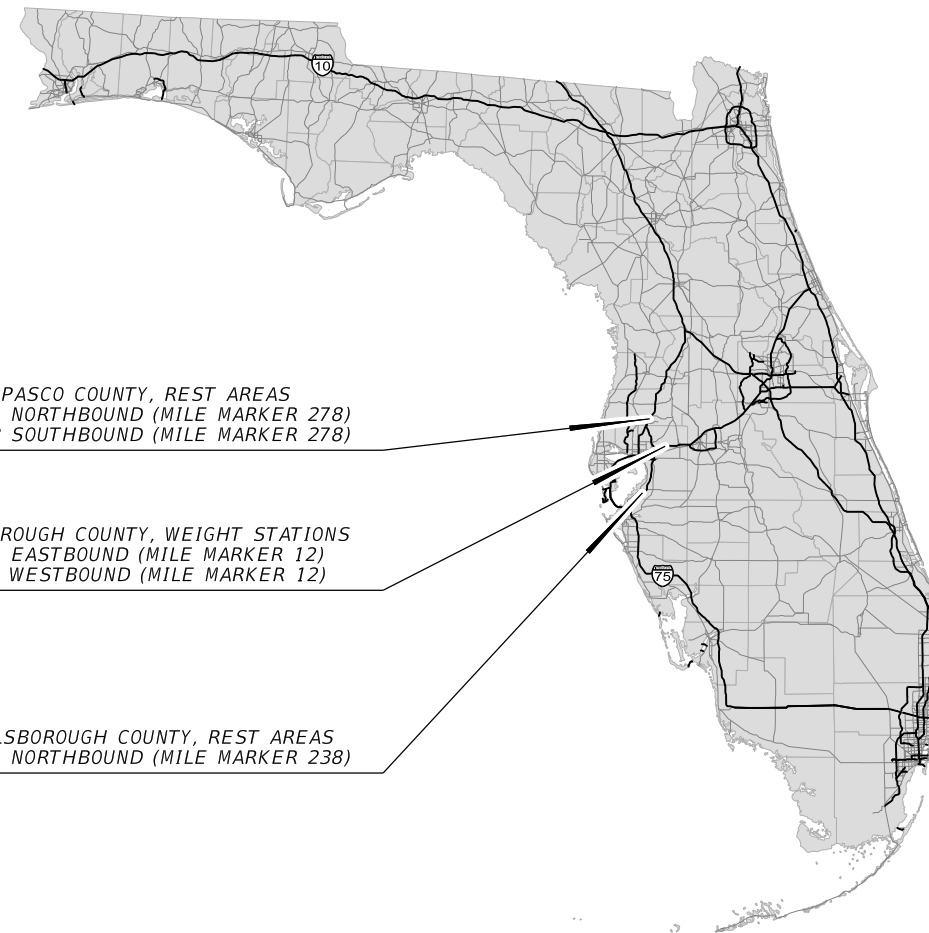
FINANCIAL PROJECT ID 440089-1-52-01
(FEDERAL FUNDS)

TRUCK PARKING AVAILABILITY SYSTEMS (TPAS)
INTELLIGENT TRANSPORTATION SYSTEM PLANS



INDEX OF TPAS PLANS

SHEET NO.	SHEET DESCRIPTION
1	KEY SHEET
2	GENERAL NOTES
3	GUIDESIGN WORKSHEET
IT-01 TO IT-05A	ITS PLAN SHEETS



ITS SHOP DRAWINGS
TO BE SUBMITTED TO:

30% PLANS PREPARED BY:

NOTE: THE SCALE OF THESE PLANS MAY
HAVE CHANGED DUE TO REPRODUCTION.

GOVERNING STANDARDS AND SPECIFICATIONS:
Florida Department of Transportation, 2016 Design Standards and revised Index Drawings as appended herein, and 2016 Standard Specifications for Road and Bridge Construction, as amended by Contract Documents.

For Design Standards click on the "Design Standards" link at the following web site:
<http://www.dot.state.fl.us/rddesign/DesignStandards>

For the Standard Specifications for Road and Bridge Construction click on the "Specifications" link at the following web site:
<http://www.dot.state.fl.us/specificationsoffice/StandardSpecifications>

KEY SHEET REVISIONS	
DATE	DESCRIPTION
ILLUSTRATION PURPOSE ONLY	

TRUCK PARKING AVAILABILITY
SYSTEMS (TPAS) PLANS
ENGINEER OF RECORD: _____

P.E. NO.: _____

FISCAL YEAR	SHEET NO.
16	1

FDOT PROJECT MANAGER:

GENERAL NOTES

1. THE LOCATION(S) OF THE UTILITIES SHOWN IN THE PLANS ARE BASED ON LIMITED INVESTIGATION TECHNIQUES, AND MARK-UPS FROM UTILITY OWNERS. ALL UTILITIES SHOULD BE CONSIDERED APPROXIMATE ONLY.
2. THE CONTRACTOR SHALL NOTIFY NON SUNSHINE SUBSCRIBERS AND UTILITY OWNERS LISTED THROUGH SUNSHINE STATE ONE CALL OF FLORIDA (811) TWO BUSINESS DAYS IN ADVANCE OF BEGINNING CONSTRUCTION ON THE JOB SITE.
3. FIBER OPTIC AND POWER PULL BOXES AND CONDUIT SHALL BE LOCATED WITHIN 100 FEET OF THE DEVICE THEY SUPPORT. ITS DEVICE LOCATIONS ARE APPROXIMATE AND MAY REQUIRE RELOCATION BY THE PROJECT ENGINEER. IF DEVICE RELOCATIONS OCCUR FOR ANY REASON, THE PULL BOXES AND CONDUIT SUPPORTING THAT DEVICE SHALL BE RELOCATED AND/OR EXTENDED.
4. INSTALL FIBER OPTIC CONDUIT FOR COMMUNICATION TO DEVICES AS SHOWN IN THE PLANS AND IN ACCORDANCE WITH ALL FDOT STANDARDS FOR CONDUIT INSTALLATION.
5. THE CONTRACTOR SHALL BE RESPONSIBLE FOR FURNISHING AND INSTALLING ABOVE GROUND TUBULAR ROUTE MARKERS PER SECTION 630 OF THE FDOT STANDARD SPECIFICATIONS. MARKERS SHALL BE PLACED AT A MAXIMUM OF 500 FEET AND AT EVERY PULL AND SPLICE BOX LOCATION. A MARKER LABEL TEMPLATE SHALL BE PROVIDED FOR REVIEW.
6. THE CONDUIT SHALL BE SEALED WITH THE SPECIFIED DUCT PLUG AT THE TIME OF CONDUIT INSTALLATION AND AFTER FINAL FIBER INSTALLATION.
7. ELECTRICAL POWER SERVICE METERS SHALL HAVE A SEPARATE BREAKER FOR EACH ITS CIRCUIT.
8. THE CONTRACTOR SHALL HAND DIG (SOFT DIG) TO A DEPTH OF FOUR (4) FEET WHERE UTILITIES ARE IN CONFLICT PRIOR TO USE OF A MECHANICAL AUGER. ANY POTENTIAL CONFLICTS SHALL BE REPORTED TO THE PROJECT ENGINEER IMMEDIATELY.

UTILITY OWNERS

Bright House Networks
Marvin Usry Jr.
407-532-8509

Hillsborough County Water
813-272-5977

Pasco County Utilities
727-847-8131

Spectrum
Thomas Sansing
813-862-0522

Spectrum
Ron Connor
727-656-8365

Tampa Bay Water
Danielle Keirsey
813-929-4552

Tampa Electric Company
Marilyn Aloj
813-223-0800

TECO Peoples Gas Transmission
Luis Castellanos
813-275-3743

Frontier Communications
David Reed
352-345-2348

Withlacoochee River Electric
Corey Littlefield
352-588-5115

LEGEND

EXISTING	PROPOSED	
		IN-GROUND SENSORS
		REPEATER
		ACCESS POINT
		DETECTION ZONE
		CCTV WITH POLE
		MVDS
		MULTI-POST STATIC SIGN W/ ELECTRICAL DISPLAY SIGN
		BASE MOUNT CABINET
		POLE MOUNT CABINET
		PULL BOX
		FIBER OPTIC PULL BOX
		SPLICE VAULT
		POWER SERVICE
		POLE
		DMS
		CONDUIT, OPEN TRENCH
		CONDUIT, DIRECTIONAL BORE
		FIBER OPTIC RUN
		POWER RUN
		WIRELESS ANTENNA

REVISIONS				STATE OF FLORIDA DEPARTMENT OF TRANSPORTATION			<i>GENERAL NOTES</i>	SHEET NO.
DATE	DESCRIPTION	DATE	DESCRIPTION	ROAD NO.	COUNTY	FINANCIAL PROJECT ID		2
	ILLUSTRATION PURPOSE ONLY			VARIES	VARIES	440089-1-52-01		

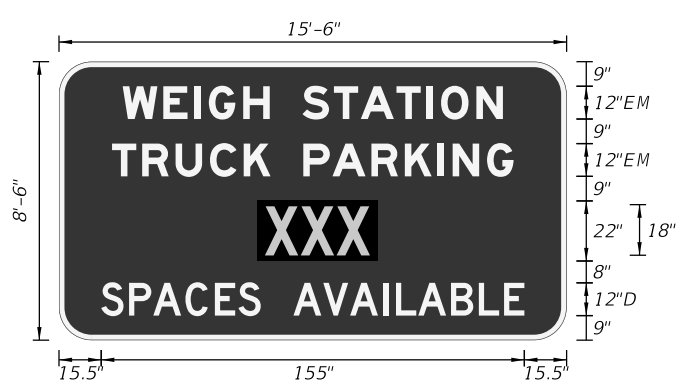
SIGN NAME		REST	QTY		SIGN NUMBER		STATION(S)	
PANEL		BORDER		none				
WIDTH	15'-6"	WIDTH	2"					
HEIGHT	8'-6"	RADII	12"					
LEGEND	White	COLOR	White					
COLOR	Blue							
SYMBOL(S)	ANGLE	X	Y	WID	HT			
DMS	0	72.7	29	44	22			
SIGN NUMBER		NUMBER OF POSTS	CLEARANCE Edge Of Lane	COLUMN SIZE	AVERAGE LENGTH			



NO. OF LIGHT FIXTURES	FIXTURE SPACING	PHOTOMETRIC CURVE	WATT	VOLTAGE

COPY		R	E	S	T	A	R	E	A	L															
SPACE	40.7	12.2	11	11.5	8.9	12	14.3	12.2	10.2	12.1	40.7	104.5													
COPY		T	R	U	C	K	P	A	R	K	I	N	G	L											
SPACE	19.4	11	12.2	12.6	12.4	9.8	12	10.7	14.3	12.2	11.8	5.8	12.6	9.7	19.4	147.1									
COPY		S	P	A	C	E	S	A	V	A	I	L	A	B	L	E	L								
SPACE	15.5	10.2	8.9	11.8	10.8	8.6	8.2	12	10.9	9.8	12	4.8	8.2	12	10.2	9.2	7.4	15.5	155						
COPY																									
SPACE																									
COPY																									
SPACE																									
COPY																									
SPACE																									
COPY																									
SPACE																									

SIGN NAME		WEIGH	QTY		SIGN NUMBER		STATION(S)	
PANEL		BORDER		none				
WIDTH	15'-6"	WIDTH	2"					
HEIGHT	8'-6"	RADII	12"					
LEGEND	White	COLOR	White					
COLOR	Blue							
SYMBOL(S)	ANGLE	X	Y	WID	HT			
DMS	0	72.7	29	44	22			
SIGN NUMBER		NUMBER OF POSTS	CLEARANCE Edge Of Lane	COLUMN SIZE	AVERAGE LENGTH			



NO. OF LIGHT FIXTURES	FIXTURE SPACING	PHOTOMETRIC CURVE	WATT	VOLTAGE

COPY		W	E	I	G	H	S	T	A	T	I	O	N	L											
SPACE	23.3	14.9	11.4	5.3	12.6	9.7	12	11.5	9.8	13.1	11	5.3	13	9.7	23.3	139.3									
COPY		T	R	U	C	K	P	A	R	K	I	N	G	L											
SPACE	19.4	11	12.2	12.6	12.4	9.8	12	10.7	14.3	12.2	11.8	5.8	12.6	9.7	19.4	147.1									
COPY		S	P	A	C	E	S	A	V	A	I	L	A	B	L	E	L								
SPACE	15.5	10.2	8.9	11.8	10.8	8.6	8.2	12	10.9	9.8	12	4.8	8.2	12	10.2	9.2	7.4	15.5	155						
COPY																									
SPACE																									
COPY																									
SPACE																									
COPY																									
SPACE																									
COPY																									
SPACE																									

SIGN NAME		QTY		SIGN NUMBER		STATION(S)	
PANEL		BORDER					
WIDTH	WIDTH						
HEIGHT	RADII						
LEGEND	COLOR						
COLOR							
SYMBOL(S)	ANGLE	X	Y	WID	HT		
SIGN NUMBER		NUMBER OF POSTS	CLEARANCE Edge Of Lane	COLUMN SIZE	AVERAGE LENGTH		

NO. OF LIGHT FIXTURES	FIXTURE SPACING	PHOTOMETRIC CURVE	WATT	VOLTAGE

SIGN NAME		QTY		SIGN NUMBER		STATION(S)	
PANEL		BORDER					
WIDTH	WIDTH						
HEIGHT	RADII						
LEGEND	COLOR						
COLOR							
SYMBOL(S)	ANGLE	X	Y	WID	HT		
SIGN NUMBER		NUMBER OF POSTS	CLEARANCE Edge Of Lane	COLUMN SIZE	AVERAGE LENGTH		

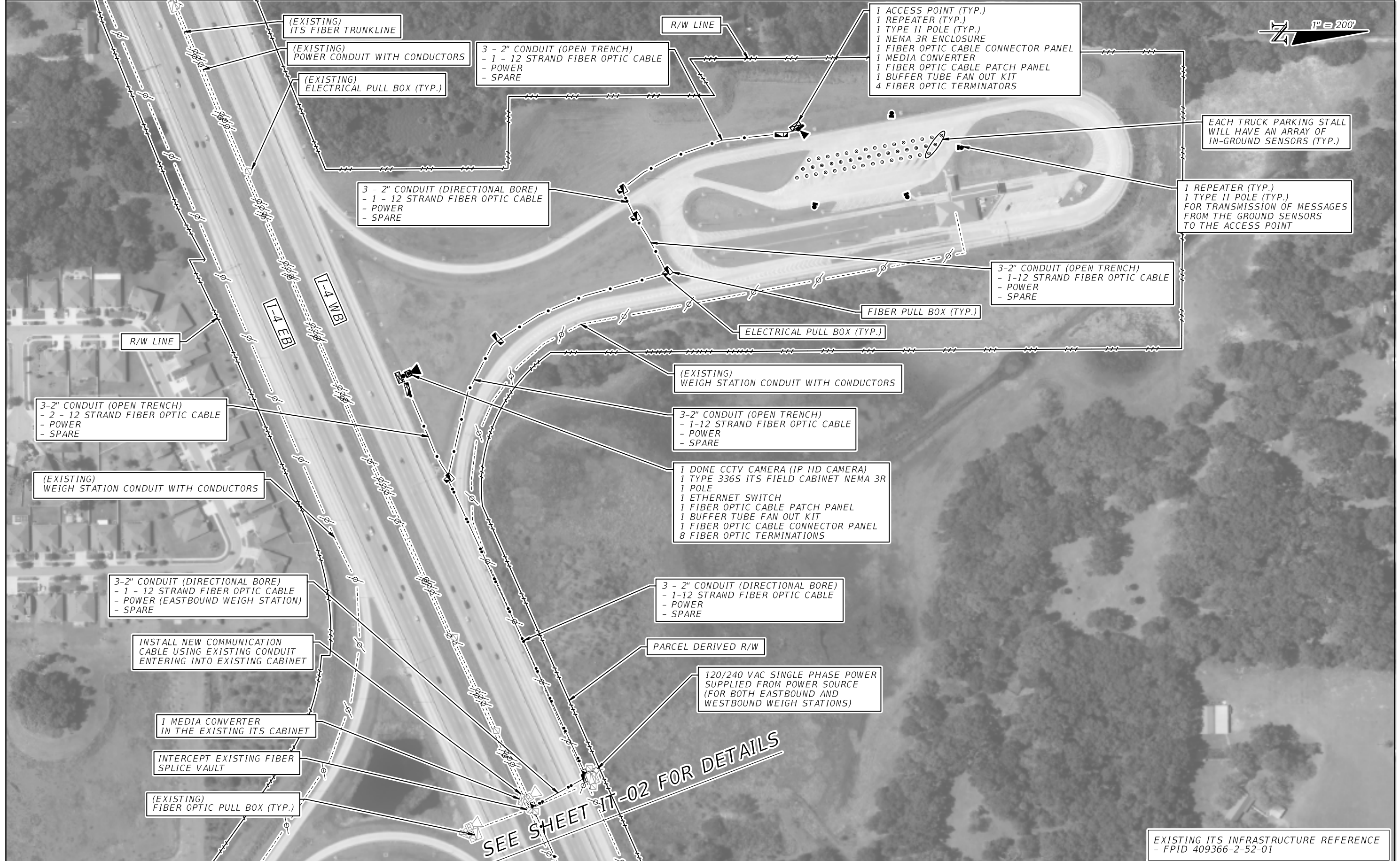
NO. OF LIGHT FIXTURES	FIXTURE SPACING	PHOTOMETRIC CURVE	WATT	VOLTAGE

COPY																			
SPACE																			
COPY																			
SPACE																			
COPY																			
SPACE																			
COPY																			
SPACE																			
COPY																			
SPACE																			
COPY																			
SPACE																			

COPY																			
SPACE																			
COPY																			
SPACE																			
COPY																			
SPACE																			
COPY																			
SPACE																			
COPY																			
SPACE																			
COPY																			
SPACE																			

REVISIONS			
DATE	DESCRIPTION	DATE	DESCRIPTION

STATE OF FLORIDA			GUIDESIGN WORKSHEET	SHEET NO. 3
DEPARTMENT OF TRANSPORTATION				
ROAD NO.	COUNTY	FINANCIAL PROJECT ID		
VARIES	VARIES	440089-1-52-01		



EACH TRUCK PARKING STALL WILL HAVE AN ARRAY OF IN-GROUND SENSORS (TYP.)

1 REPEATER (TYP.)
1 TYPE II POLE (TYP.)
FOR TRANSMISSION OF MESSAGES FROM THE GROUND SENSORS TO THE ACCESS POINT

1 ACCESS POINT (TYP.)
1 REPEATER (TYP.)
1 TYPE II POLE (TYP.)
1 NEMA 3R ENCLOSURE
1 FIBER OPTIC CABLE CONNECTOR PANEL
1 MEDIA CONVERTER
1 FIBER OPTIC CABLE PATCH PANEL
1 BUFFER TUBE FAN OUT KIT
4 FIBER OPTIC TERMINATORS

3 - 2" CONDUIT (OPEN TRENCH)
- 1 - 12 STRAND FIBER OPTIC CABLE
- POWER
- SPARE

3 - 2" CONDUIT (DIRECTIONAL BORE)
- 1 - 12 STRAND FIBER OPTIC CABLE
- POWER
- SPARE

3-2" CONDUIT (OPEN TRENCH)
- 1-12 STRAND FIBER OPTIC CABLE
- POWER
- SPARE

3-2" CONDUIT (OPEN TRENCH)
- 2 - 12 STRAND FIBER OPTIC CABLE
- POWER
- SPARE

3-2" CONDUIT (OPEN TRENCH)
- 1-12 STRAND FIBER OPTIC CABLE
- POWER
- SPARE

1 DOME CCTV CAMERA (IP HD CAMERA)
1 TYPE 336S ITS FIELD CABINET NEMA 3R
1 POLE
1 ETHERNET SWITCH
1 FIBER OPTIC CABLE PATCH PANEL
1 BUFFER TUBE FAN OUT KIT
1 FIBER OPTIC CABLE CONNECTOR PANEL
8 FIBER OPTIC TERMINATIONS

3-2" CONDUIT (DIRECTIONAL BORE)
- 1 - 12 STRAND FIBER OPTIC CABLE
- POWER (EASTBOUND WEIGH STATION)
- SPARE

3 - 2" CONDUIT (DIRECTIONAL BORE)
- 1-12 STRAND FIBER OPTIC CABLE
- POWER
- SPARE

120/240 VAC SINGLE PHASE POWER SUPPLIED FROM POWER SOURCE (FOR BOTH EASTBOUND AND WESTBOUND WEIGH STATIONS)

INSTALL NEW COMMUNICATION CABLE USING EXISTING CONDUIT ENTERING INTO EXISTING CABINET

1 MEDIA CONVERTER IN THE EXISTING ITS CABINET

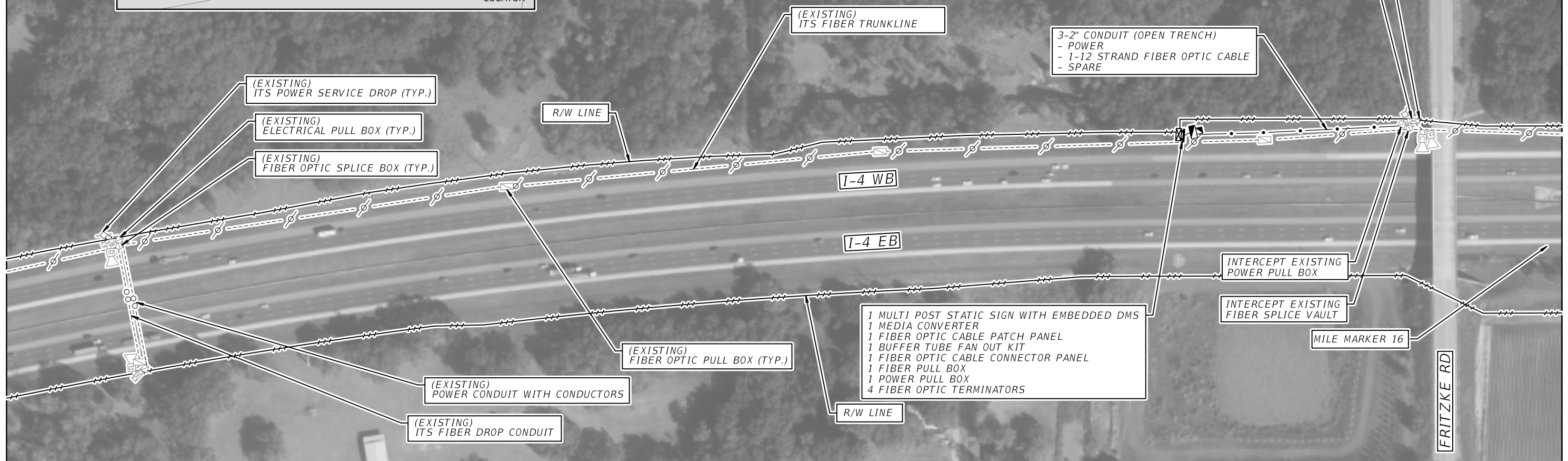
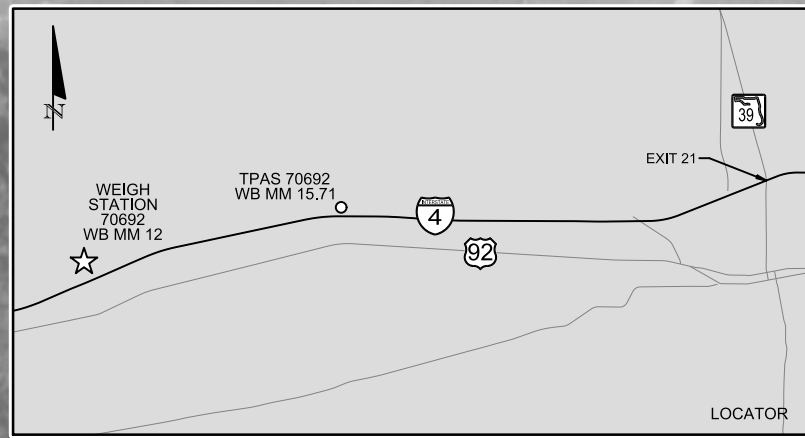
INTERCEPT EXISTING FIBER SPLICE VAULT

(EXISTING) FIBER OPTIC PULL BOX (TYP.)

SEE SHEET IT-02 FOR DETAILS

EXISTING ITS INFRASTRUCTURE REFERENCE - FPID 409366-2-52-01

REVISIONS		DESCRIPTION		STATE OF FLORIDA DEPARTMENT OF TRANSPORTATION			TRUCK PARKING AVAILABILITY SYSTEM HILLSBOROUGH COUNTY, FDOT DISTRICT 7 WEIGH STATION 70692 (16 SPACES) WESTBOUND MILE MARKER 12	SHEET NO. IT-01
DATE	DESCRIPTION	DATE	DESCRIPTION	ROAD NO.	COUNTY	FINANCIAL PROJECT ID		
			ILLUSTRATION PURPOSE ONLY	1-4	HILLSBOROUGH	440089-1-52-01		



**WEIGH STATION
TRUCK PARKING
XXX
SPACES AVAILABLE**

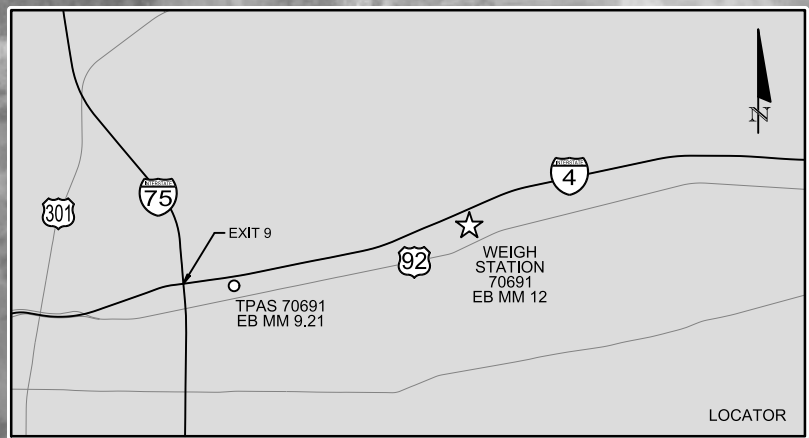
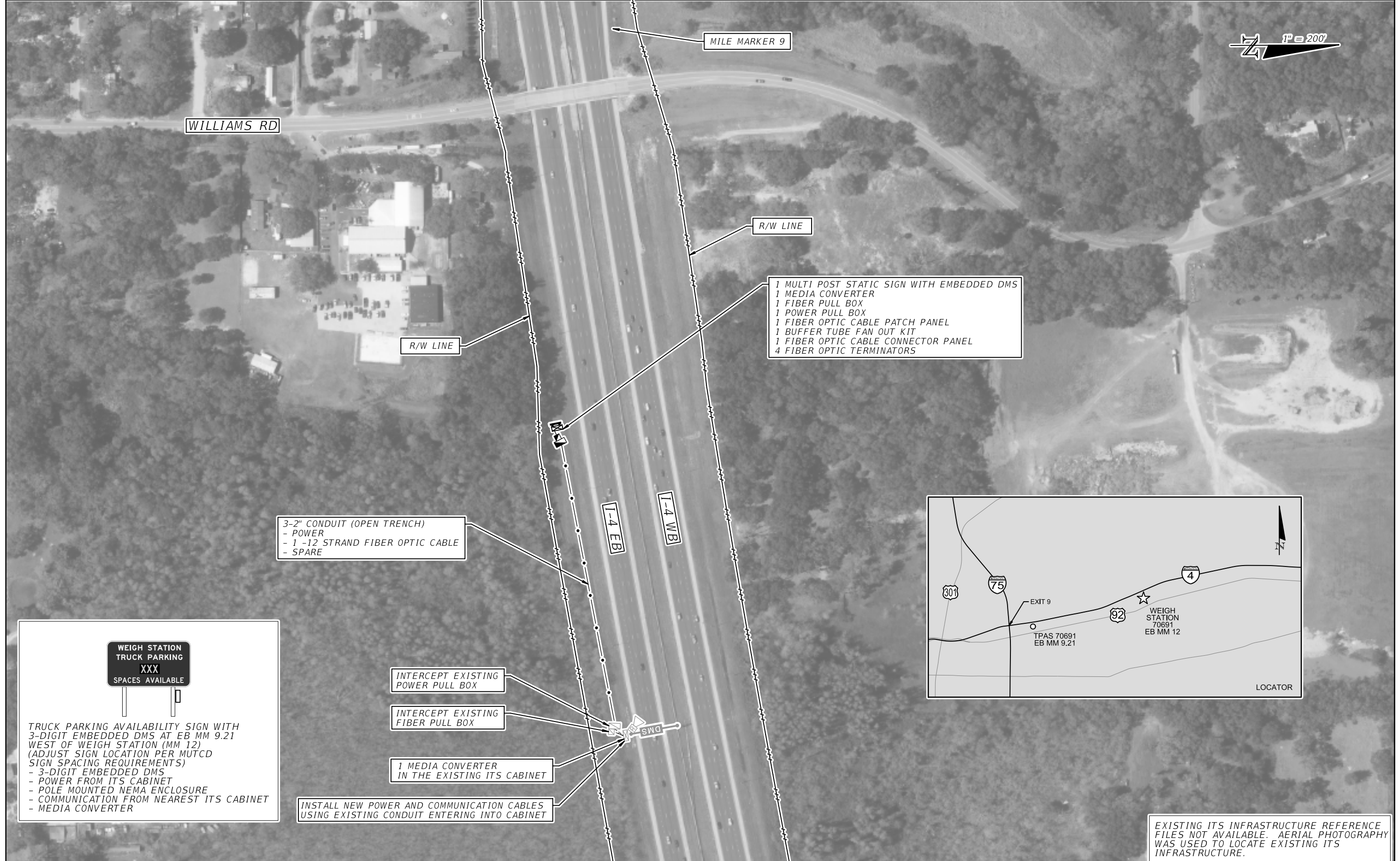
TRUCK PARKING AVAILABILITY SIGN WITH 3-DIGIT EMBEDDED DMS AT WB MM 15.71 EAST OF WEIGH STATION (MM 12) (ADJUST SIGN LOCATION PER MUTCD SIGN SPACING REQUIREMENTS)
 - 3-DIGIT EMBEDDED DMS
 - POWER FROM NEAREST ITS CABINET
 - POLE MOUNTED NEMA CABINET
 - COMMUNICATION FROM NEAREST ITS CABINET

EXISTING ITS INFRASTRUCTURE REFERENCE
 - FPID 409366-2-52-01

REVISIONS		DESCRIPTION		STATE OF FLORIDA DEPARTMENT OF TRANSPORTATION			TRUCK PARKING AVAILABILITY SYSTEM HILLSBOROUGH COUNTY, FDOT DISTRICT 7 TPAS SIGN 70692 WESTBOUND MILE MARKER 15.71	SHEET NO. IT-01A
DATE	DESCRIPTION	DATE	DESCRIPTION	ROAD NO.	COUNTY	FINANCIAL PROJECT ID		
			ILLUSTRATION PURPOSE ONLY	I-4	HILLSBOROUGH	440089-1-52-01		



REVISIONS		DESCRIPTION		STATE OF FLORIDA DEPARTMENT OF TRANSPORTATION			TRUCK PARKING AVAILABILITY SYSTEM HILLSBOROUGH COUNTY, FDOT DISTRICT 7 WEIGH STATION 70691 (16 SPACES) EASTBOUND MILE MARKER 12	SHEET NO. IT-02
DATE	DESCRIPTION	DATE	DESCRIPTION	ROAD NO.	COUNTY	FINANCIAL PROJECT ID		
			ILLUSTRATION PURPOSE ONLY	I-4	HILLSBOROUGH	440089-1-52-01		



**WEIGH STATION
TRUCK PARKING
XXX
SPACES AVAILABLE**

TRUCK PARKING AVAILABILITY SIGN WITH
 3-DIGIT EMBEDDED DMS AT EB MM 9.21
 WEST OF WEIGH STATION (MM 12)
 (ADJUST SIGN LOCATION PER MUTCD
 SIGN SPACING REQUIREMENTS)
 - 3-DIGIT EMBEDDED DMS
 - POWER FROM ITS CABINET
 - POLE MOUNTED NEMA ENCLOSURE
 - COMMUNICATION FROM NEAREST ITS CABINET
 - MEDIA CONVERTER

3-2" CONDUIT (OPEN TRENCH)
 - POWER
 - 1 -12 STRAND FIBER OPTIC CABLE
 - SPARE

INTERCEPT EXISTING
 POWER PULL BOX

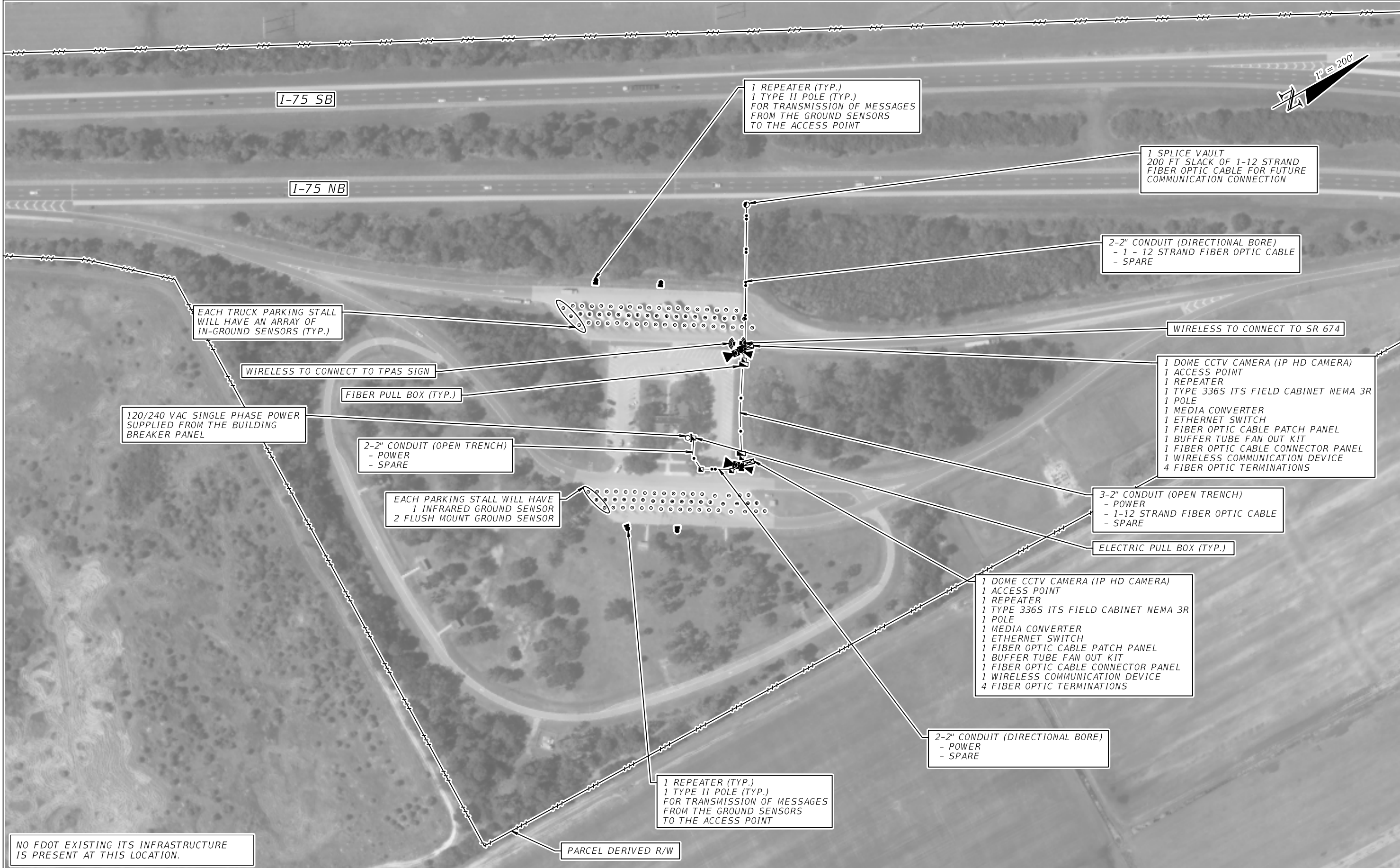
INTERCEPT EXISTING
 FIBER PULL BOX

1 MEDIA CONVERTER
 IN THE EXISTING ITS CABINET

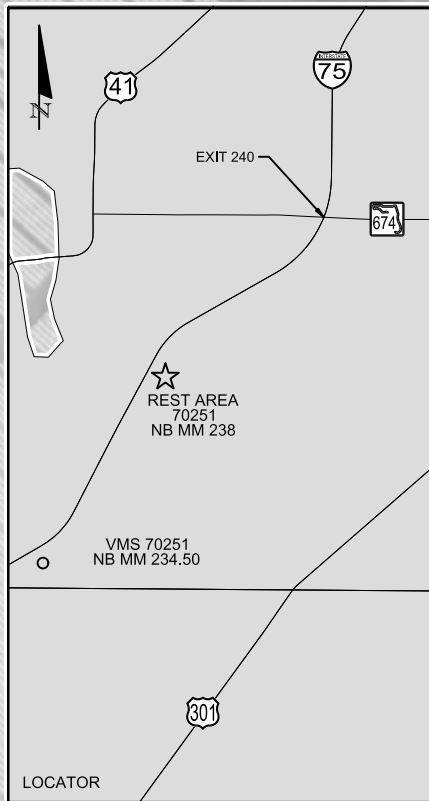
INSTALL NEW POWER AND COMMUNICATION CABLES
 USING EXISTING CONDUIT ENTERING INTO CABINET

EXISTING ITS INFRASTRUCTURE REFERENCE
 FILES NOT AVAILABLE. AERIAL PHOTOGRAPHY
 WAS USED TO LOCATE EXISTING ITS
 INFRASTRUCTURE.

REVISIONS				STATE OF FLORIDA DEPARTMENT OF TRANSPORTATION			TRUCK PARKING AVAILABILITY SYSTEM HILLSBOROUGH COUNTY, FDOT DISTRICT 7 TPAS SIGN 70691 EASTBOUND MILE MARKER 9.21	SHEET NO.
DATE	DESCRIPTION	DATE	DESCRIPTION	ROAD NO.	COUNTY	FINANCIAL PROJECT ID		IT-02A
ILLUSTRATION PURPOSE ONLY				I-4	HILLSBOROUGH	440089-1-52-01		



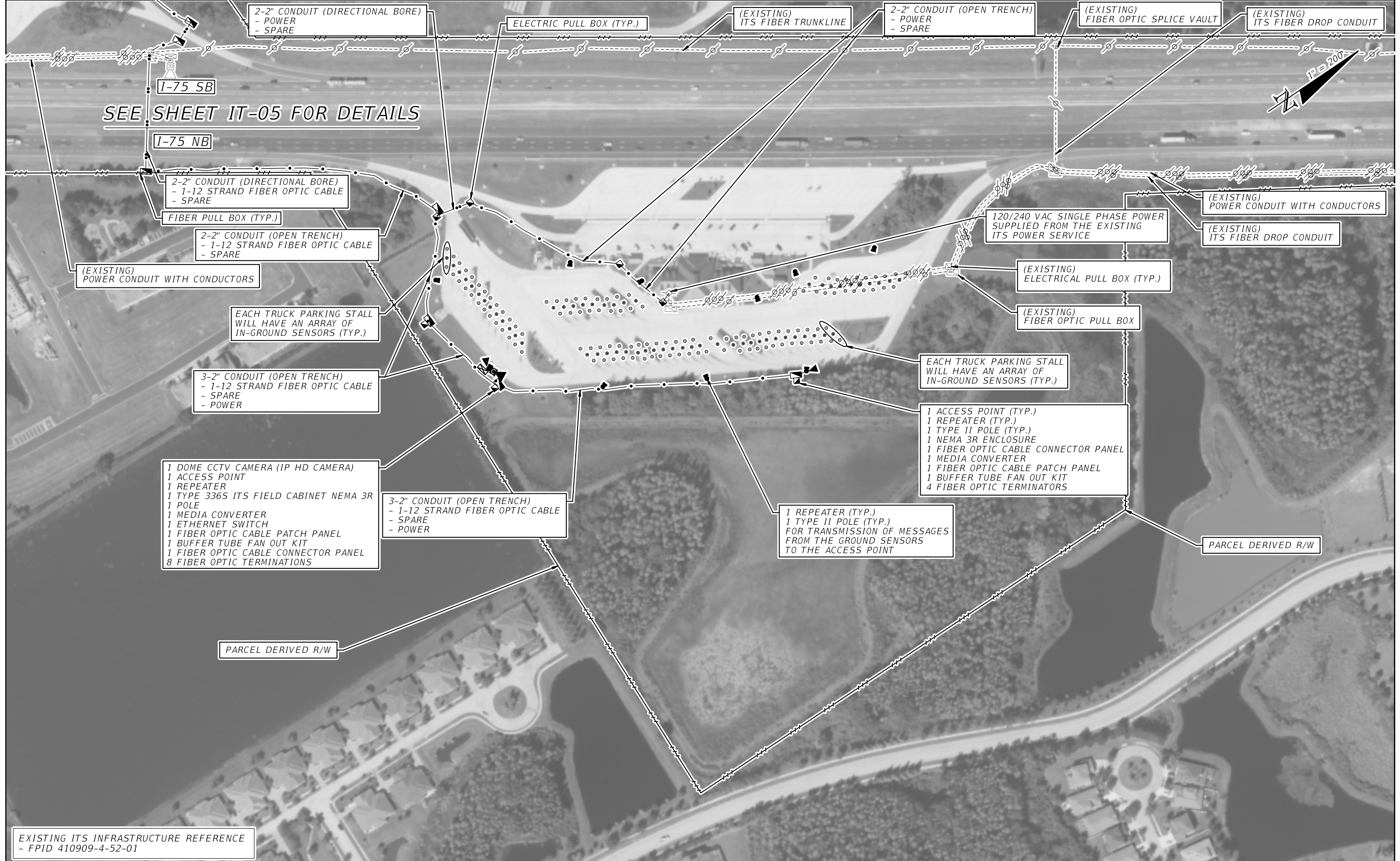
DATE		DESCRIPTION		DATE		DESCRIPTION							
ILLUSTRATION PURPOSE ONLY													
<p style="text-align: center;">STATE OF FLORIDA DEPARTMENT OF TRANSPORTATION</p> <table border="1" style="width: 100%; border-collapse: collapse;"> <tr> <td style="width: 25%;">ROAD NO.</td> <td style="width: 25%;">COUNTY</td> <td style="width: 50%;">FINANCIAL PROJECT ID</td> </tr> <tr> <td style="text-align: center;">I-75</td> <td style="text-align: center;">HILLSBOROUGH</td> <td style="text-align: center;">440089-1-52-01</td> </tr> </table>								ROAD NO.	COUNTY	FINANCIAL PROJECT ID	I-75	HILLSBOROUGH	440089-1-52-01
ROAD NO.	COUNTY	FINANCIAL PROJECT ID											
I-75	HILLSBOROUGH	440089-1-52-01											
<p>TRUCK PARKING AVAILABILITY SYSTEM HILLSBOROUGH COUNTY, FDOT DISTRICT 7 REST AREA 70251 (34 SPACES) NORTHBOUND MILE MARKER 238</p>							<p>SHEET NO. IT-03</p>						

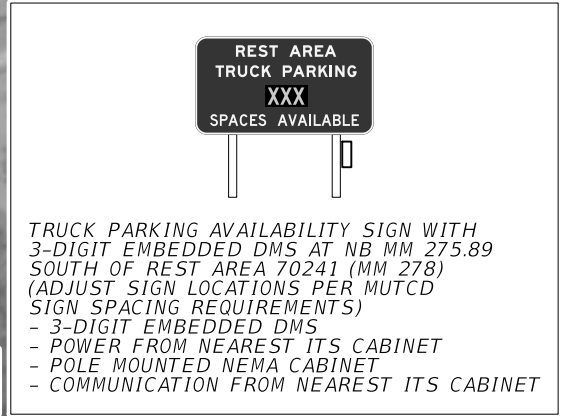


TRUCK PARKING AVAILABILITY SIGN WITH 3-DIGIT EMBEDDED DMS AT NB MM 234.50 SOUTH OF REST AREA 70251 (MM 238) (ADJUST SIGN LOCATION PER MUTCD SIGN SPACING REQUIREMENTS)

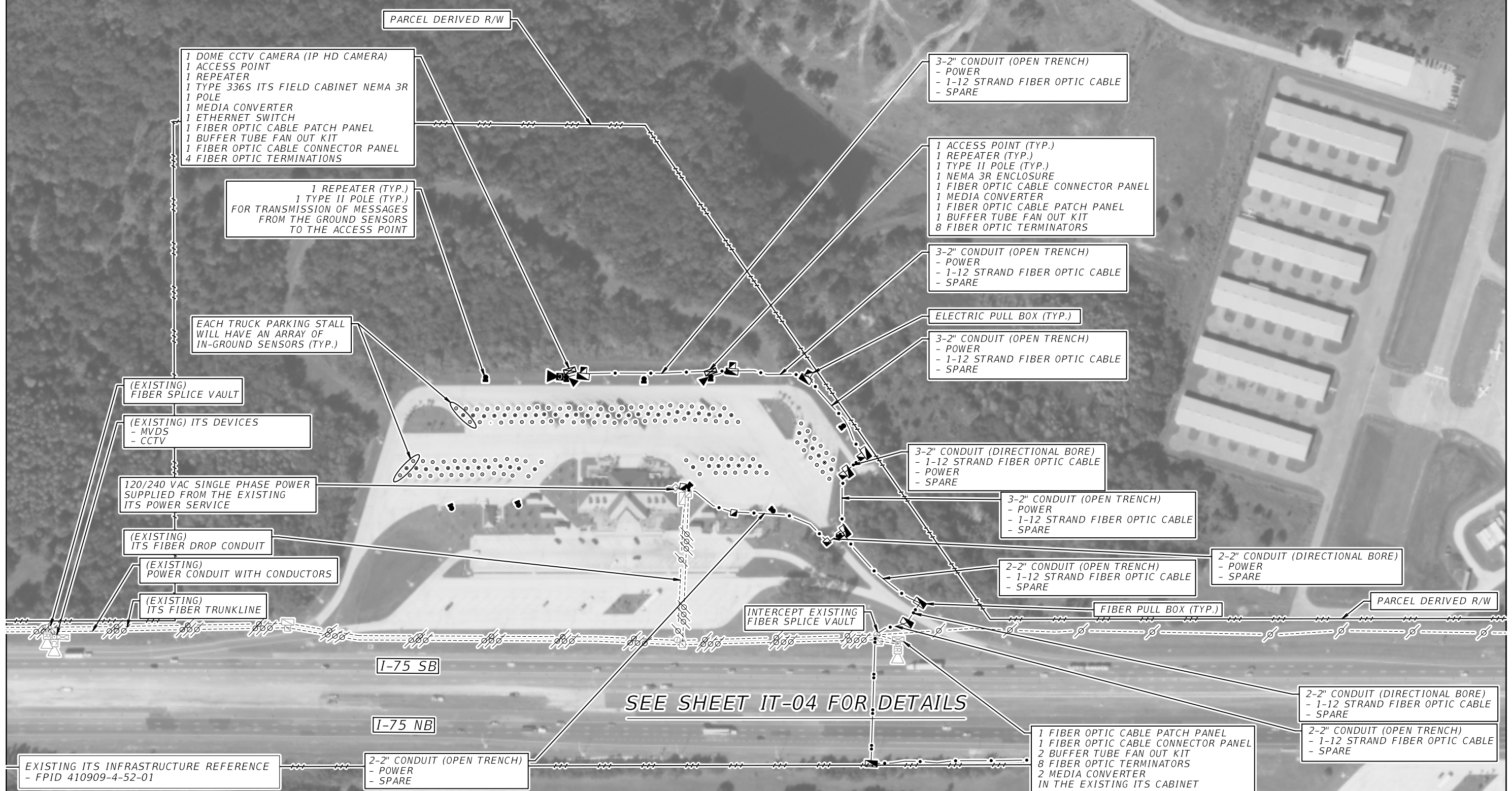
- 3-DIGIT EMBEDDED DMS
- SOLAR POWER FOR EMBEDDED DMS
- POLE MOUNTED NEMA CABINET
- WIRELESS COMMUNICATION EQUIPMENT

REVISIONS				STATE OF FLORIDA DEPARTMENT OF TRANSPORTATION			TRUCK PARKING AVAILABILITY SYSTEM HILLSBOROUGH COUNTY, FDOT DISTRICT 7 TPAS SIGN 70251 NORTHBOUND MILE MARKER 234.50		SHEET NO.
DATE	DESCRIPTION	DATE	DESCRIPTION	ROAD NO.	COUNTY	FINANCIAL PROJECT ID			
			ILLUSTRATION PURPOSE ONLY	I-75	HILLSBOROUGH	440089-1-52-01			IT-03A



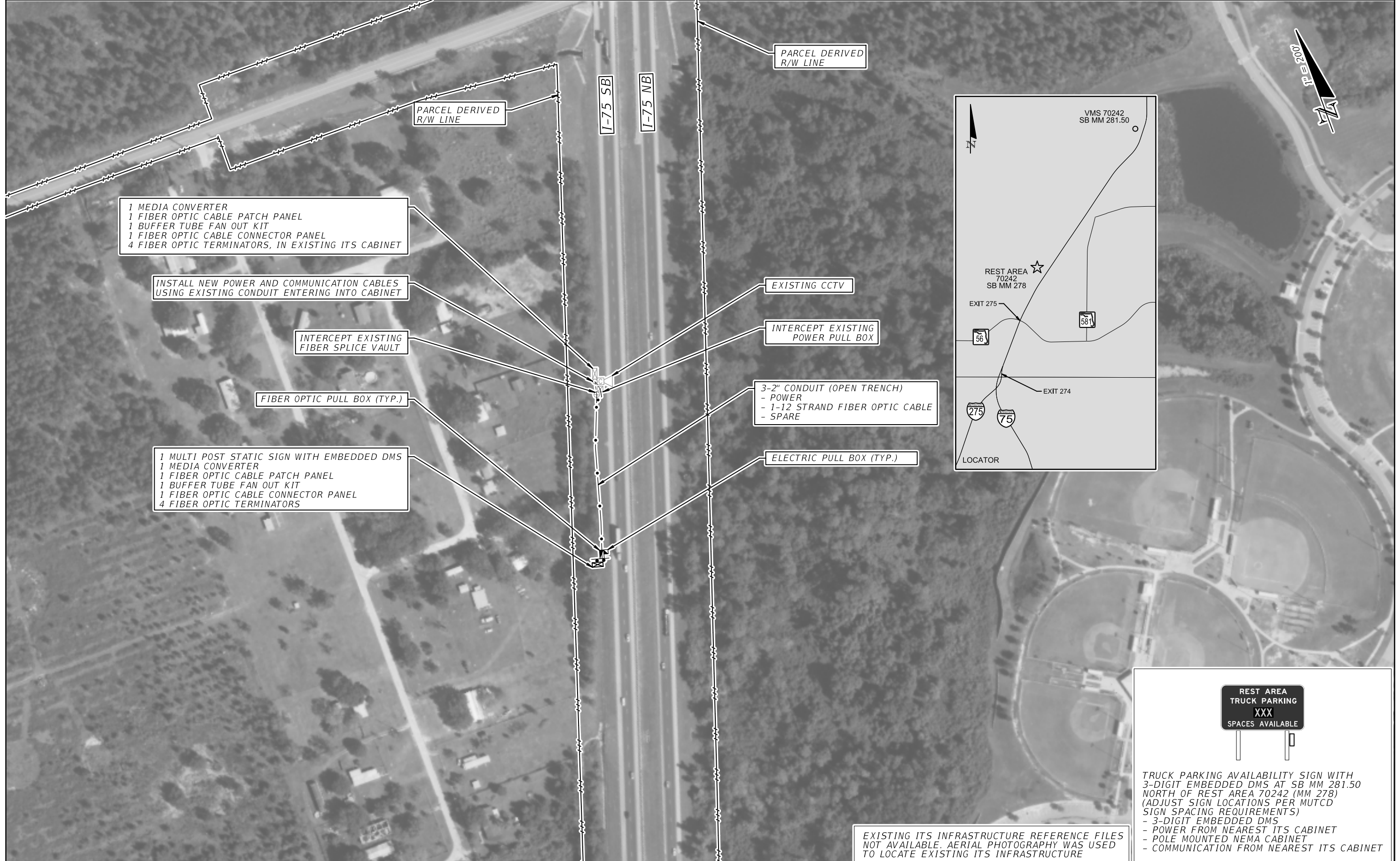


REVISIONS				STATE OF FLORIDA DEPARTMENT OF TRANSPORTATION			TRUCK PARKING AVAILABILITY SYSTEM PASCO COUNTY, FDOT DISTRICT 7 TPAS SIGN 70241 NORTHBOUND MILE MARKER 275.89	SHEET NO. IT-04A
DATE	DESCRIPTION	DATE	DESCRIPTION	ROAD NO.	COUNTY	FINANCIAL PROJECT ID		
			ILLUSTRATION PURPOSE ONLY	I-75	PASCO	440089-1-52-01		



SEE SHEET IT-04 FOR DETAILS

REVISIONS				ILLUSTRATION PURPOSE ONLY	STATE OF FLORIDA DEPARTMENT OF TRANSPORTATION			TRUCK PARKING AVAILABILITY SYSTEM PASCO COUNTY, FDOT DISTRICT 7 REST AREA 70242 (53 SPACES) SOUTHBOUND MILE MARKER 278	SHEET NO.
DATE	DESCRIPTION	DATE	DESCRIPTION		ROAD NO.	COUNTY	FINANCIAL PROJECT ID		IT-05
						I-75	PASCO		440089-1-52-01



1 MEDIA CONVERTER
 1 FIBER OPTIC CABLE PATCH PANEL
 1 BUFFER TUBE FAN OUT KIT
 1 FIBER OPTIC CABLE CONNECTOR PANEL
 4 FIBER OPTIC TERMINATORS, IN EXISTING ITS CABINET

INSTALL NEW POWER AND COMMUNICATION CABLES USING EXISTING CONDUIT ENTERING INTO CABINET

INTERCEPT EXISTING FIBER SPLICE VAULT

FIBER OPTIC PULL BOX (TYP.)

1 MULTI POST STATIC SIGN WITH EMBEDDED DMS
 1 MEDIA CONVERTER
 1 FIBER OPTIC CABLE PATCH PANEL
 1 BUFFER TUBE FAN OUT KIT
 1 FIBER OPTIC CABLE CONNECTOR PANEL
 4 FIBER OPTIC TERMINATORS

PARCEL DERIVED R/W LINE

PARCEL DERIVED R/W LINE

I-75 SB

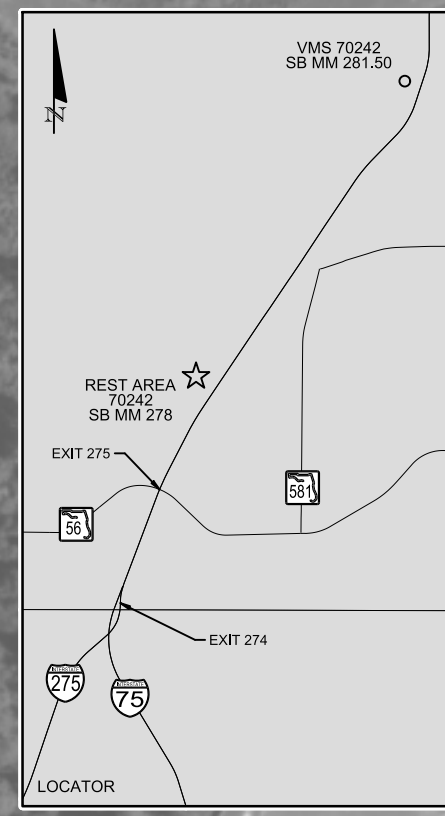
I-75 NB

EXISTING CCTV

INTERCEPT EXISTING POWER PULL BOX

3-2" CONDUIT (OPEN TRENCH)
 - POWER
 - 1-12 STRAND FIBER OPTIC CABLE
 - SPARE

ELECTRIC PULL BOX (TYP.)



TRUCK PARKING AVAILABILITY SIGN WITH 3-DIGIT EMBEDDED DMS AT SB MM 281.50 NORTH OF REST AREA 70242 (MM 278) (ADJUST SIGN LOCATIONS PER MUTCD SIGN SPACING REQUIREMENTS)
 - 3-DIGIT EMBEDDED DMS
 - POWER FROM NEAREST ITS CABINET
 - POLE MOUNTED NEMA CABINET
 - COMMUNICATION FROM NEAREST ITS CABINET

EXISTING ITS INFRASTRUCTURE REFERENCE FILES NOT AVAILABLE. AERIAL PHOTOGRAPHY WAS USED TO LOCATE EXISTING ITS INFRASTRUCTURE

REVISIONS				STATE OF FLORIDA DEPARTMENT OF TRANSPORTATION			TRUCK PARKING AVAILABILITY SYSTEM PASCO COUNTY, FDOT DISTRICT 7 TPAS SIGN 70242 SOUTHBOUND MILE MARKER 281.50	SHEET NO. IT-05A
DATE	DESCRIPTION	DATE	DESCRIPTION	ROAD NO.	COUNTY	FINANCIAL PROJECT ID		
			ILLUSTRATION PURPOSE ONLY	I-75	PASCO	440089-1-52-01		